



London Breed
Mayor

Committee Members

Fonda Davidson
Yohana Quiroz
Lygia Stebbing
Pat Sullivan
Jerry Yang
Meenoo Yashar



Ingrid Mezquita
Executive Director

OECE Citizens Advisory Committee April 23, 2020 2:00 - 4:00 pm Virtual Convening **Meeting Minutes**

Members Present: Yohana Quiroz, Pat Sullivan, Meenoo Yashar, Fonda Davidson, Lygia Stebbing

Members Absent: Jerry Yang

I. Call to Order, Agenda Review, Zoom Norm-Setting

- A. Chair Quiroz welcomed attendees, called the meeting to order, reviewed the agenda, and discussed zoom etiquette and norms.

II. Check-In

- A. Chair Quiroz led CAC members in a check-in to discuss how everyone was managing and adjusting to the City and State's shelter-in-place order. Members discussed the challenges of keeping their programs closed as well as activities they were engaged in to stay connected with their families virtually.

III. COVID-19 Response: OECE Guidance to Providers

- A. Director Mezquita shared the ways OECE has adapted to keep providers informed about policy and funding guidance during the COVID-19 pandemic including a dedicated space on the OECE website, and frequent virtual roundtable meetings with FCCs and Center Administrators. She explained current public health order allows for licensed early care and education programs to close unless providing services to children of essential service workers.

IV. COVID-19 Response: Emergency Child Care System Program Development

- A. Director Mezquita explained that in response to the City's Shelter in Place Order, Mayor Breed asked SF Rec. and Park, DCYF, SF Public Library, First 5 San Francisco and OECE to work together to make emergency child care available to children of essential service workers. OECE and First 5 were tasked with setting up the emergency child care for children ages 0-5 while other departments coordinated to provide care for school-aged children.

- B. Lisa Lee, Senior Program Officer at First 5 San Francisco presented the planning, logistics, supports, and workflow for onboarding programs into the Emergency Child Care system as well as lessons learned so far (*see attachment 1*).
 - i. CAC members asked about the biggest challenges in operating emergency child care and what, if anything, they could do to help.
 - 1. Lisa Lee responded that acquiring adequate PPE and cleaning supplies had presented a huge challenge and called on CAC members to activate their networks and let OECE know if they had channels to PPE donations.
 - ii. Members of the public commended OECE and First 5 for being thoughtful about the safety and quality of emergency child care given the unprecedented circumstances and short amount of time available to get the program up and running.

V. Emergency Child Care System – How Is it Going?

- A. Wei-Min Wang, OECE’s Data, Policy, and Impact Manager presented data on the scope and reach of OECE and First 5’s Emergency Child Care Program for including enrollments by age and essential service worker category (*see attachment 2*).
- B. Director Mezquita shared several program highlights including stories from ECC educators highlighting their bravery, dedication, and commitment to step up and serve families during this difficult time. She reiterated the challenges related to acquiring PPE as well as challenges associated with maintaining positive social-emotional development while wearing masks and maintaining social distance.

VI. Emergency Child Care Next Steps

- A. Director Mezquita presented OECE’s current planning efforts focused on the path to reopening ECE including the formation of a multi-stakeholder reopening task group as well as plans to conduct a rapid needs assessment to better understand economic impacts and program needs (*see attachment 3*).
 - i. CAC members urged OECE to consider mixed delivery and prioritize in-person learning opportunities for those in vulnerable categories.
 - ii. CAC members were concerned about the viability of attendance-based reimbursement given that overhead will remain the same or increase but social distancing requirements will greatly reduced class sizes.

VII. Grantee and Program Funding – Controller’s Office Policy

- A. Director Mezquita explained the San Francisco Controller’s Office has authorized continuity of payment to all city-funded grantees through May 1, 2020. The Controller’s Office has not yet issued information regarding City payment policy after May 1, 2020. OECE will continue to do its best to keep programs informed as information becomes available.

VIII. Closing

A. Meeting Adjourned at 3:58pm.

Next scheduled meeting: June 9, 2020, 3pm-5pm.

For questions or assistance, please contact Maya Castleman

Email: maya.castleman@sfgov.org Phone: (415) 355-3669

**Know Your Rights Under the Sunshine Ordinance: Sunshine Ordinance Task Force, 1 Dr. Carlton B. Goodlett Place, Room 244, San Francisco, CA 94102. (415) 554-7724 / fax (415) 554-5163 sotf@sfgov.org

Attachments:

I. ECC Program Information Presentation

II. ECC Program Data Dashboard Presentation

III. Recovering and Reopening Presentation

Attachment I: ECC Program Information Presentation



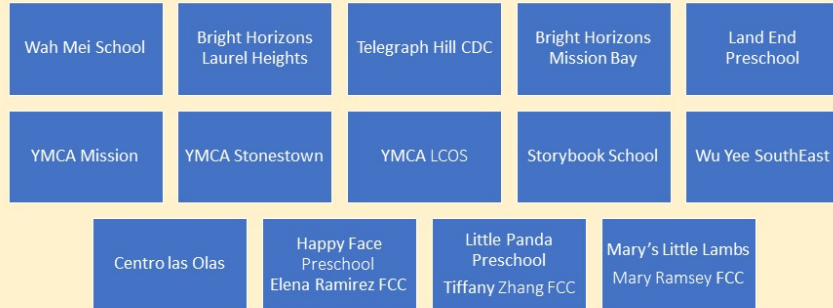
SF Emergency Child Care Key Assumptions

"Whether they are providing emergency care or sidelined by the pandemic, child care educators need greater protection, higher remuneration, and more respect."

**Center for the Study of
the Child Care Workforce**

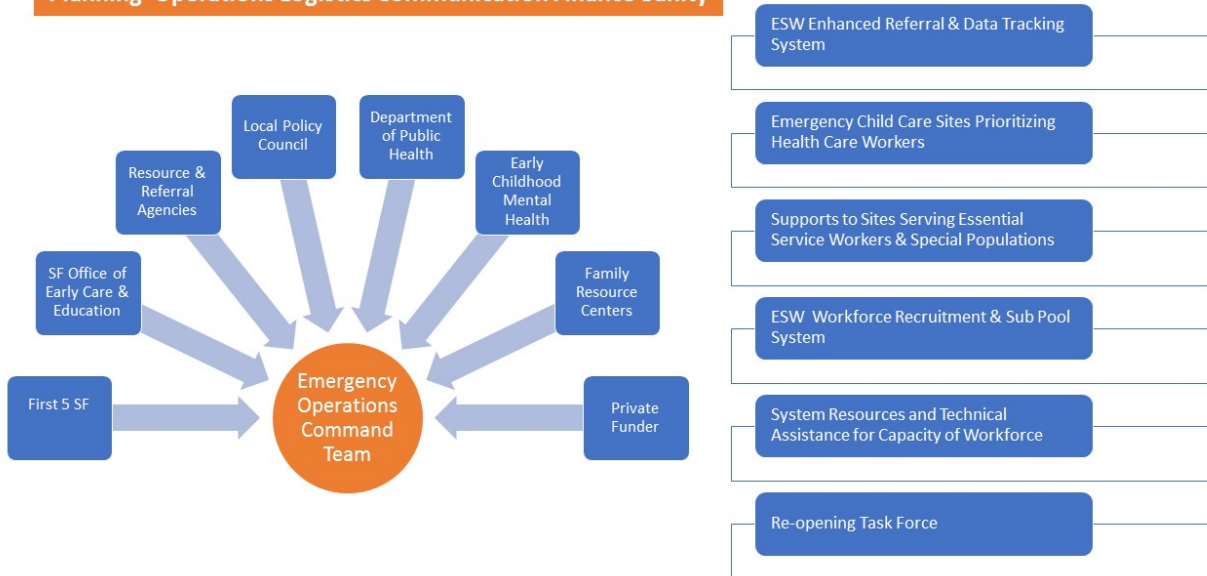
- Tighter Guidelines for ECC sites
- Funding support for Group Size and Ratios
- Assurance of PPE (masks gloves for EEC workers)
- Integrated DPH, ECMH and instructional supports
- Flexible classrooms grants to cover additional costs
- Subpool of Health cleared educators who have health insurance.
- Criteria that protects vulnerable populations and family members
- Agreement statements acknowledging risk

Participating Emergency Child Care Program Sites



SF Early Care and Learning System Response

Planning Operations Logistics Communication Finance Sanity

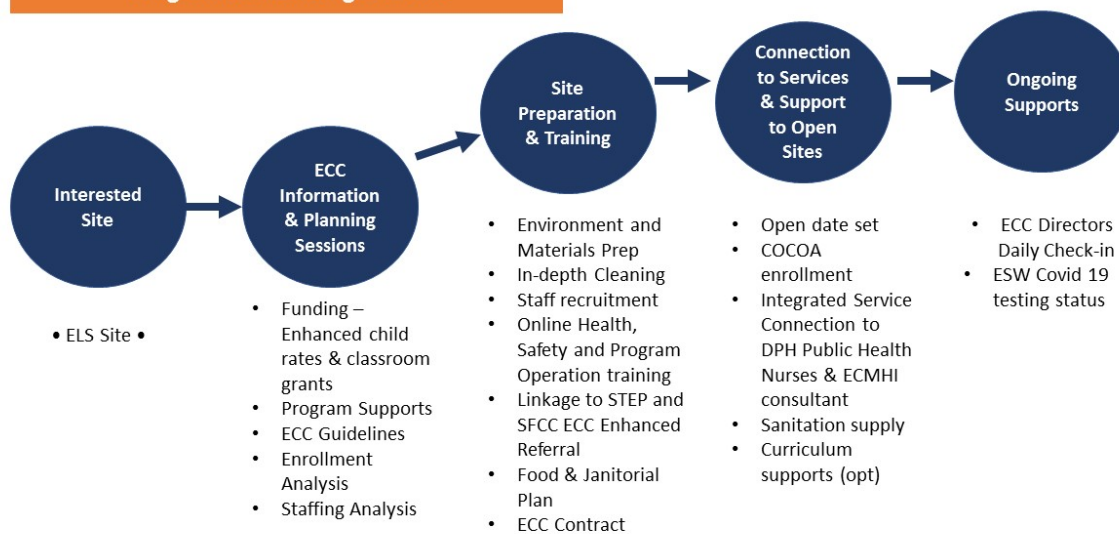


SF Early Care and Learning System Supports for Emergency Child Care Sites during Stay-at-Home Ordinance



Emergency Child Care Program for Young Children

Program Onboarding Process

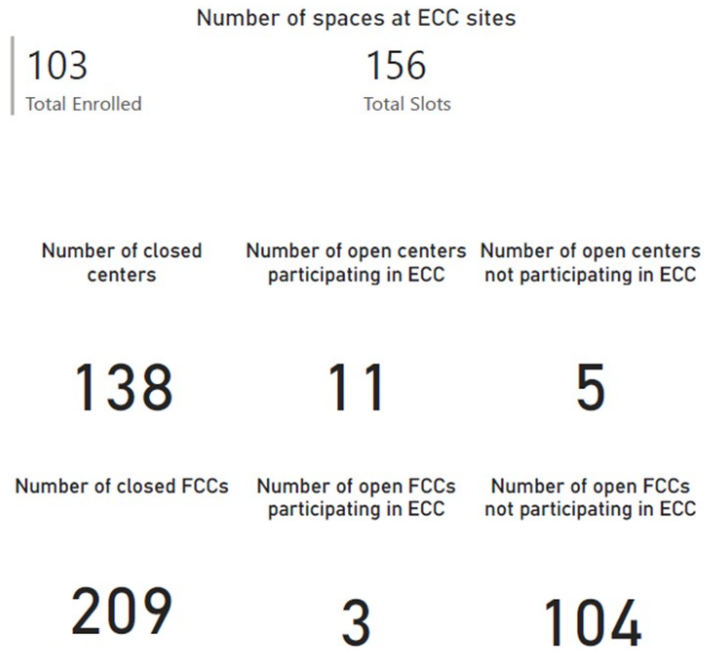


Lesson Learning about the "new normal"

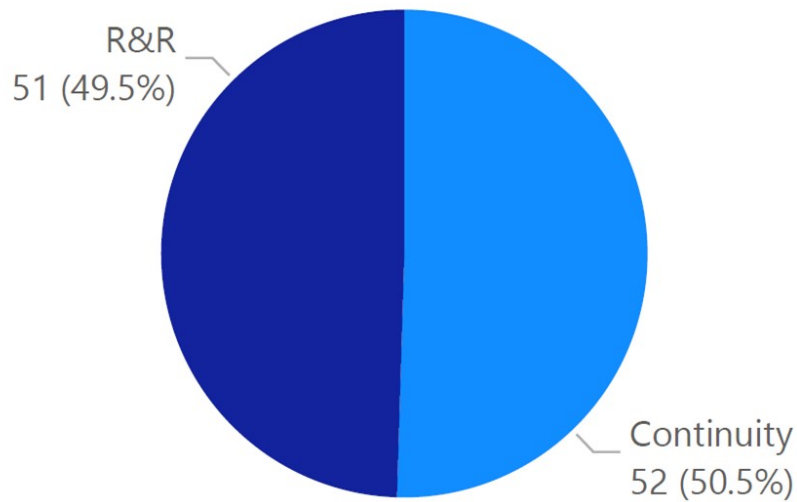
- Physical distancing calls for a more "relaxed schedule"
- Working in primary caregiving groups is key
- Incorporation of individualized sensorial play for materials not easily shared or cleaned
- Social connection strategies while physical distancing
- Arrival, departures, mealtimes and naptime adjustments
- Staggering use of areas among primary groups
- What's doable for babies and toddlers
- Healing centered, relationship-based, family-centered care matters



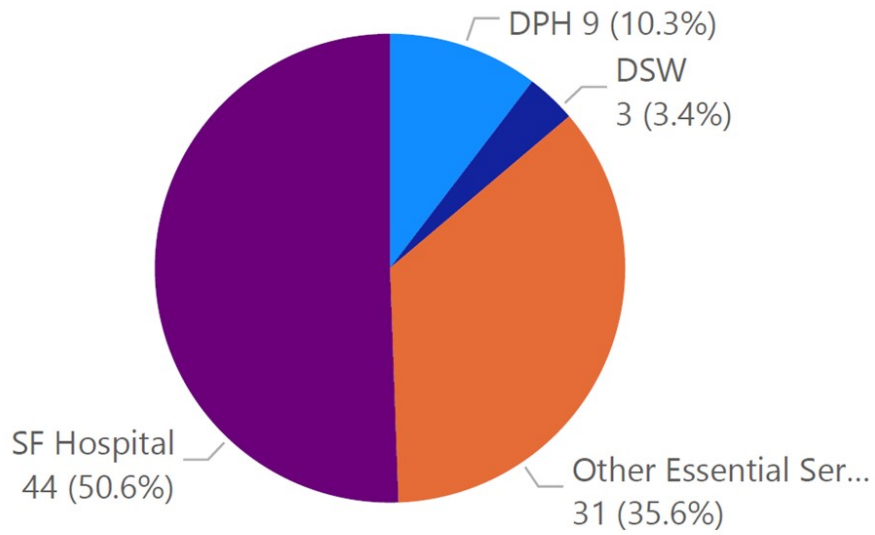
Attachment II: ECC Program Data Dashboard Presentation



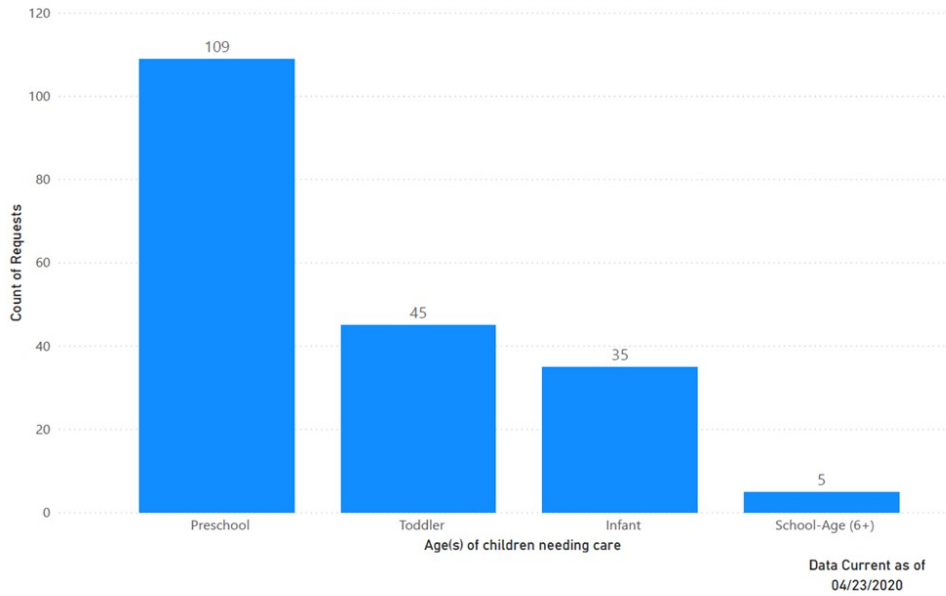
R&R vs Continuity Enrollments, n = 103



Enrollments by ESW Category, n = 87



Emergency Child Care Spaces Requested by Age Agroup, n = 194



Recovering and Reopening

Response Planning

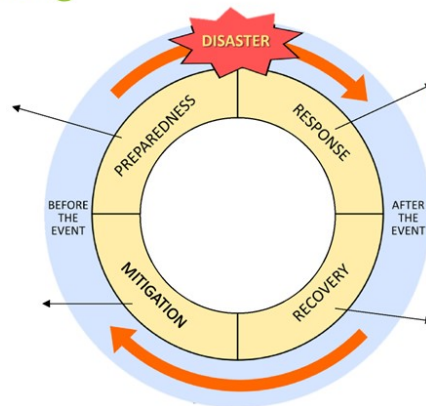


San Francisco Office
of Early Care & Education

Response Planning

Plans made before a shock to help get ready.

Actions and plans to reduce the vulnerability and impact of (or altogether prevent) anticipated future shocks.



Actions taken during or immediately following a shock.

Actions to return to the pre-shock state (or better).

Task Group Formed

Re-opening of city-funded ECE sites

- ▶ Assess how the public health order will be extended or adapted
 - ▶ Will sites need to re-open just to serve essential service workers?
 - ▶ Will sites need to re-open to provide services to currently enrolled children
 - ▶ If so, under what new/adapted conditions?
- ▶ Focus on understanding the problem, not identifying solutions (yet).

Rapid Needs Assessment

- ▶ Survey to all ECE funded sites on the impact of COVID 19 and current workforce
- ▶ Analysis of what ECE teachers remain in the field, and needs of their own families, due to regional school closures
- ▶ Assess the availability of cleaning, and other personal protection supplies to create a central location for procuring and dissemination of supplies.
- ▶ Create a “registry” to match teachers with sites that are re-opening, through a phased approach.
- ▶ Improving the communications systems - including addressing inequities in access to technology and use.